



# End of Month Process Guide for the **AcuSport® V6 System Software**

---

May 2015

The AcuSport Retail Technology Group (RTG) recommends completing the procedures in this guide as part of the End of Month (EOM) process. To determine if these or other procedures are necessary for a specific enterprise, consult with an accountant or other professional.

# Notices

---

Copyright © 2015 AcuSport Corporation.  
940 Industrial Drive, Suite 107  
Sauk Rapids, MN 56379  
1-800-547-7120  
All rights reserved.

## General

No part of this document may be reproduced, distributed, performed, displayed, or used to prepare a derivative work without the prior and express written consent of AcuSport Corporation (“AcuSport”). The software described in this document is furnished under a license agreement and may be used only in accordance with the terms and conditions of the license agreement. Information in this document is subject to change without notice, and AcuSport assumes no responsibility for errors.

## Trademarks and Credits

ACUSPORT, AXIS, AXIS Retail Management System (AXIS RMS), AXIS Data Center, AXIS Register, and AXIS E4473 are trademarks of AcuSport and shall not be used without the express written permission of AcuSport.

Other trademarks, such as QuickBooks, are not being used as a trademark herein and are the property of the respective owners.

## Legal Counsel

This program, printed documentation, and documents should not be used as a substitute for professional advice in specific situations. The procedures, images, and examples in this document are for illustrative purposes only and may not be applicable in your setting due to differences in preference, settings, and/or state and local regulations.

The following notice is required by law:

**AcuSport products and services are not a substitute for the advice of an Attorney.**

**You are encouraged to seek the advice of your own attorney concerning the use and legality of this program, documentation, and forms.**

## Publication Information

End of Month Process Guide for the AcuSport® V6 System Software  
May 2015

# Contents

---

<b>Prepare for End of Month Procedures.....</b>	<b>4</b>
<b>Manually Back Up the System .....</b>	<b>5</b>
<b>Run End of Month Reports.....</b>	<b>7</b>
<b>Accounts Receivable Reconciliation Report .....</b>	<b>8</b>
<b>Class Sales Report .....</b>	<b>9</b>
<b>Manufacturer Report .....</b>	<b>10</b>
<b>Vendor Purchase Report .....</b>	<b>11</b>
<b>Item MTD Report.....</b>	<b>12</b>
<b>QOH Report.....</b>	<b>13</b>
<b>Gift Certificate Report .....</b>	<b>14</b>
<b>Monthly Tax Totals Report .....</b>	<b>15</b>
<b>Save a Report to a File.....</b>	<b>16</b>
<b>Reset Month-End Totals .....</b>	<b>18</b>
<b>Reset A/R Statements .....</b>	<b>20</b>
<b>Run the A/R Statements Report.....</b>	<b>21</b>

# Prepare for End of Month Procedures

---

RTG recommends completing the following procedures as part of the EOM process.

1. Before starting EOM procedures, exit the FOM and IMS on the server and all workstations.
2. Complete the following EOM procedures on the server computer.

► Do not use a workstation computer to complete reset procedures.

- [Manually Back Up the System](#)
  - [Run End of Month Reports](#)
  - [Reset Month-End Totals](#)
  - [Reset A/R Statements](#)
  - [Run the A/R Statements Report](#)
3. During the EOM procedures:
    - The FOM should remain off until EOM reports and resets are completed.
    - All workstations should remain out of the IMS until all procedures are completed.
    - Sales Orders and Receiving of Inventory should not be performed until the EOM resets are completed.
    - Registers can ring up sales, but they will be offline and unable to recall special orders or layaways until EOM resets are completed and the FOM is reconnected.

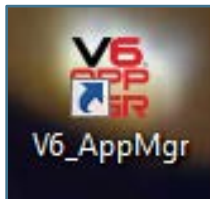
For questions regarding any of these procedures, please contact RTG Support at 800-547-7120.

# Manually Back Up the System

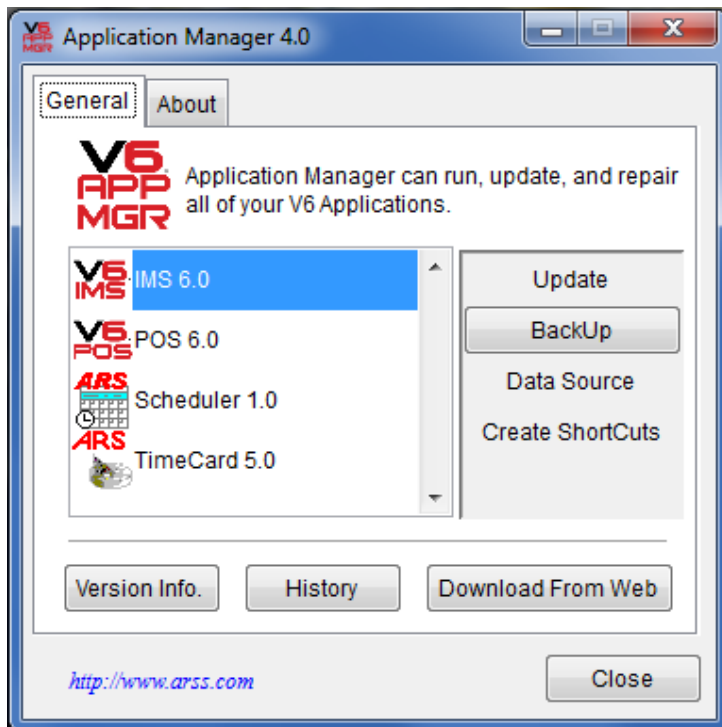
Complete the following procedure to perform a manual backup of the system.

- ▶ A manual backup is recommended even if a third-party backup service (e.g., DataSafe) is in use.

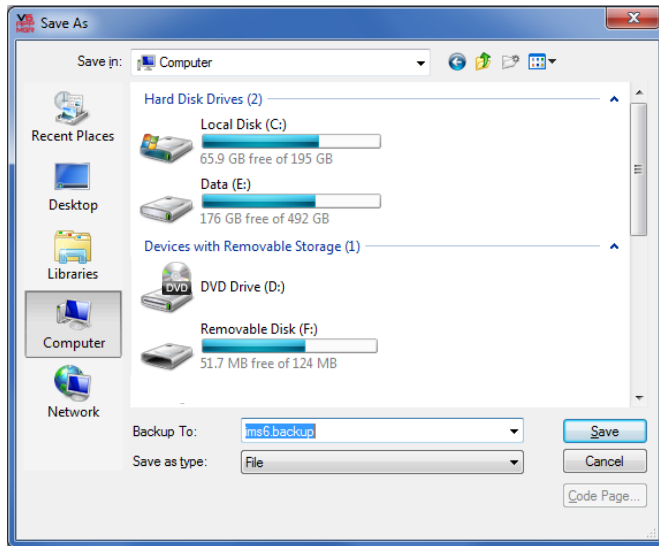
1. Insert a portable USB drive in a USB port.



2. Click the **V6\_AppMgr** icon on the desktop to display the **Application Manager** window.



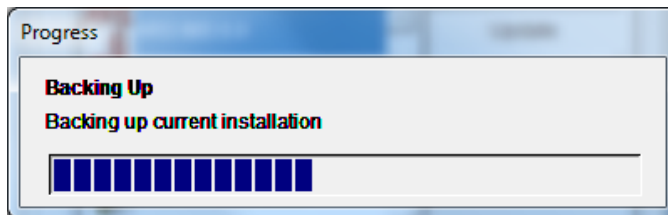
3. Select the **IMS 6.0** option.
4. Click the **BackUp** button to display a **Save As** window.



5. Navigate to and click the portable USB drive (**Removable Disk**).
6. Enter a distinctive name for the backup file in the **Backup To** field.

► To avoid overwriting files, give the file a unique name (e.g., 2016\_December\_ims6.backup) rather than the default (im6.backup) name.

7. Click the **Save** button to display the **Progress** window.



8. When the **Progress** window closes to indicate the backup procedure is complete, remove the USB drive and place it in a secure, preferably off-site location.

# Run End of Month Reports

---

RTG recommends running, printing, and saving each of the following reports as part of EOM procedures:

► Be sure to consult with an accountant to determine what specific information and reports are required for End of Month procedures. Produce other reports as needed.

- [Accounts Receivable Reconciliation Report](#)
- [Class Sales Report](#)
- [Manufacturer Report](#)
- [Vendor Purchase Report](#)
- [Item MTD Report](#)
- [QOH Report](#)
- [Gift Certificate Report](#)
- [Monthly Tax Totals Report](#)

Reports should be printed as needed for hardcopy distribution and saved in an electronic file for future retrieval. Refer to the [Save a Report to a File](#) procedure for more information.

# Accounts Receivable Reconciliation Report

The Accounts Receivable Reconciliation Report provides individual account activity and is used to verify customer balances prior to printing statements and the A/R Reset.

► This report needs to be verified prior to completing an [A/R Reset](#).

1. Select **Reports > Accounts Receivable** from the menu bar.
2. Click the **AR Reconciliation** report to select it.
3. Click the **Next** button to display the **Output Options** window.
4. Complete the following procedures as needed:
  - Click the **Preview** button to preview the report.
  - Click the **Print** button to print the report.
  - Complete the [Save a Report to a File](#) procedure to save the report to a file.



# Class Sales Report

The Class Sales Report provides a monthly history of Sales, Cost of Goods Sold per Department, Markdowns, etc.

1. Select **Reports > Department/Class** from the menu bar.
2. Click the **Class Sales** report to select it.
3. Click the **Next** button to display the **Filter Records** window.
4. Do not select filters.
5. Click the **Next** button to display the **Sort Records** window.
6. Select **Department Description** from the **Primary sort** drop-down field.
7. Select **Class Description** from the **Secondary sort** drop-down field.
8. Click the **Next** button to display the **Output Options** window.
9. Complete the following procedures as needed:
  - Click the **Preview** button to preview the report.
  - Click the **Print** button to print the report.
  - Complete the [Save a Report to a File](#) procedure to save the report to a file.

# Manufacturer Report

The Manufacturer Report displays purchases and co-op percentages for manufacturers that have been assigned to items in the system.

1. Select **Reports > Vendor/Xref/Mfg** from the menu bar.
2. Click the **Manufacturer** report to select it.
3. Click the **Next** button to display the **Filter Records** window.
4. Do not select filters.
5. Click the **Next** button to display the **Sort Records** window.
6. Select **Manufacturer** from the **Primary sort** drop-down field.
7. Click the **Next** button to display the **Output Options** window.
8. Complete the following procedures as needed:
  - Click the **Preview** button to preview the report.
  - Click the **Print** button to print the report.
  - Complete the [Save a Report to a File](#) procedure to save the report to a file.

# Vendor Purchase Report

The Vendor Purchase Report lists total purchase activity for each vendor.

1. Select **Reports > Vendor/Xref/Mfg** from the menu bar.
2. Click the **Vendor Purchase** report to select it.
3. Click the **Next** button to display the **Filter Records** window.
4. Do not select filters.
5. Click the **Next** button to display the **Sort Records** window.
6. Select **Vendor** from the **Primary sort** drop-down field.
7. Click the **Next** button to display the **Output Options** window.
8. Complete the following procedures as needed:
  - Click the **Preview** button to preview the report.
  - Click the **Print** button to print the report.
  - Complete the [Save a Report to a File](#) procedure to save the report to a file.

# Item MTD Report

The Item MTD Report lists sales for Month to Date.

1. Select **Reports > Item** from the menu bar.
2. Click the **Item MtD** report to select it.
3. Click the **Next** button to display the **Filter Records** window.
4. Do not select filters.
5. Click the **Next** button to display the **Sort Records** window.
6. Select **Department Description** from the **Primary sort** drop-down field.
7. Select **Class Description** from the **Secondary sort** drop-down field.
8. Click the **Next** button to display the **Output Options** window.
9. Complete the following procedures as needed:
  - Click the **Preview** button to preview the report.
  - Click the **Print** button to print the report.
  - Complete the [Save a Report to a File](#) procedure to save the report to a file.

# QOH Report

The Quantity On Hand Report reflects the quantity on hand in number of units and the dollar value for items.

1. Select **Reports > Item** from the menu bar.
2. Click the **Quantity on Hand** report to select it.
3. Click the **Next** button to display the **Filter Records** window.
4. Do not select filters.
5. Click the **Next** button to display the **Sort Records** window.
6. Complete one of the following procedures:
  - To run a complete report,
    1. Do not select sort options.
    2. Click the **Next** button to display the **Output Options** window.
  - To run a complete report sorted by Item,
    1. Select **Department Description** from the **Primary sort** drop-down field.
    2. Select **Class Description** from the **Secondary sort** drop-down field.
    3. Select **Item Number** from the **Tertiary sort** drop-down field.
    4. Click the **Next** button to display the **Output Options** window.
  - To run a one-line report,
    1. Do not select sort options.
    2. Click the **Next** button to display the **Output Options** window.
    3. Check the **Totals Only** check box on the **Output Options** window.
  - To run a one-line report sorted by Department,
    1. Select **Department Description** from the **Primary sort** drop-down field.
    2. Click the **Next** button to display the **Output Options** window.
    3. Check the **Totals Only** check box on the **Output Options** window.
7. Complete the following procedures as needed:
  - Click the **Preview** button to preview the report.
  - Click the **Print** button to print the report.
  - Complete the [Save a Report to a File](#) procedure to save the report to a file.

# Gift Certificate Report

The Gift Certificate Report shows the outstanding balances on Gift Certificates.

1. Select **Reports > Gift** from the menu bar.
2. Click the **Gift** report to select it.
3. Click the **Next** button to display the **Filter Records** window.
4. Do not select filters.
5. Click the **Next** button to display the **Sort Records** window.
6. Select **Gift Number** from the **Primary sort** drop-down field.
7. Click the **Next** button to display the **Output Options** window.
8. Complete the following procedures as needed:
  - Click the **Preview** button to preview the report.
  - Click the **Print** button to print the report.
  - Complete the [Save a Report to a File](#) procedure to save the report to a file.

# Monthly Tax Totals Report

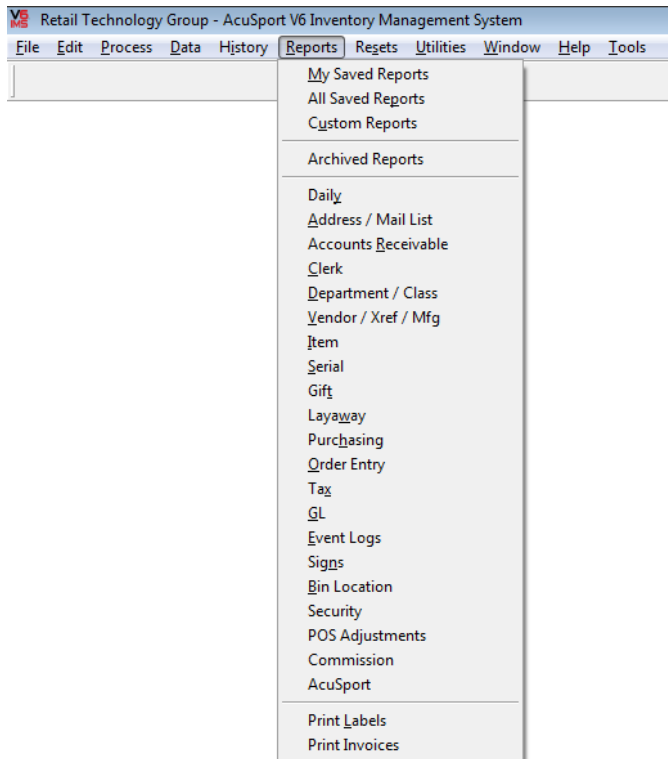
The Monthly Tax Totals Report provides sales tax information for the month.

1. Select **Reports > Tax** from the menu bar.
2. Click the **Monthly Tax Totals** report to select it.
3. Click the **Next** button to display the **Filter Records** window.
4. Do not select filters.
5. Click the **Next** button to display the **Output Options** window.
6. Complete the following procedures as needed:
  - Click the **Preview** button to preview the report.
  - Click the **Print** button to print the report.
  - Complete the [Save a Report to a File](#) procedure to save the report to a file.

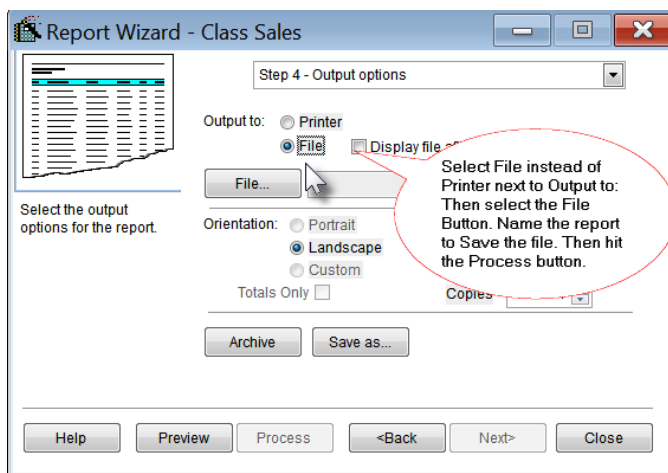
# Save a Report to a File

Complete the following procedure to save a report to a file:

1. Click the **Reports** button in the menu bar to display a drop-down menu of report options.



2. Click a report option in the drop-down menu to display the **Report Wizard** window.
3. Select the desired report and filter/sort records as needed to display the **Output Options** window.



4. In the **Output to** section, click the **File** option (radio button) to select it.



5. Click the **File** button to display an **Output to file** window.
6. Navigate to the desired location.

▶ To ensure easy access to EOM and EOY Reports in the future, set up a folder specifically for these reports on a USB drive, on the desktop, or in a dedicated directory (but NOT within the IMS directory).

7. Enter a distinctive name for the report file in the **Output** field.
8. Select the desired file format from the **Files of type** drop-down field.

▶ The PDF format is the most readable format.

9. Click the **Open** button to close the **Output to file** window.
10. Click the **Process** button

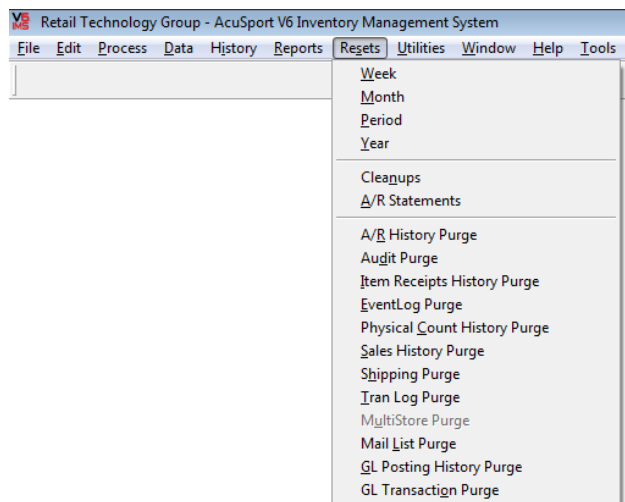
▶ When output is sent to a file instead of the printer, the **Process** button replaces the **Print** button.

# Reset Month-End Totals

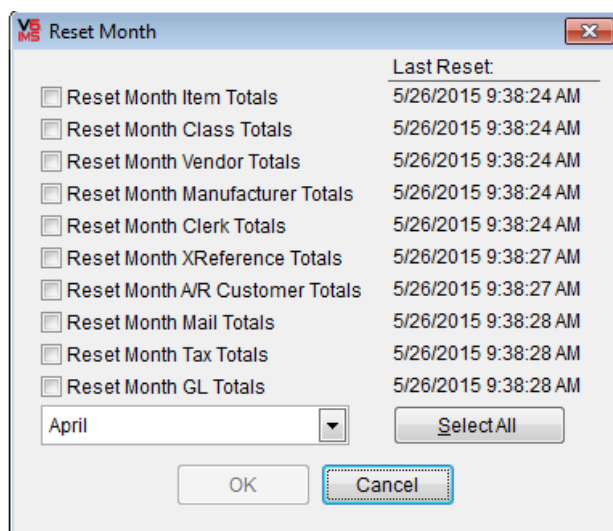
After running all necessary EOM reports, complete the following procedure to reset month-end totals:

► Do not perform a reset unless all required EOM reports have been printed and saved.

1. Click the **Resets** button in the menu bar to display a drop-down menu of reset options.



2. Click the **Month** option in the drop-down menu to display the **Reset Month** window.



3. Select the appropriate month from the drop-down field.
4. Click the **Select All** button to select all the reset options.
5. Click the **OK** button to display an informational window.

► The window indicates which resets succeeded and which, if any, failed. If any resets failed, correct the problem and repeat the reset procedure but only for the reports that failed. (A reset failure is typically caused by the FOM running or the presence of another user in the system during the reset procedure.)

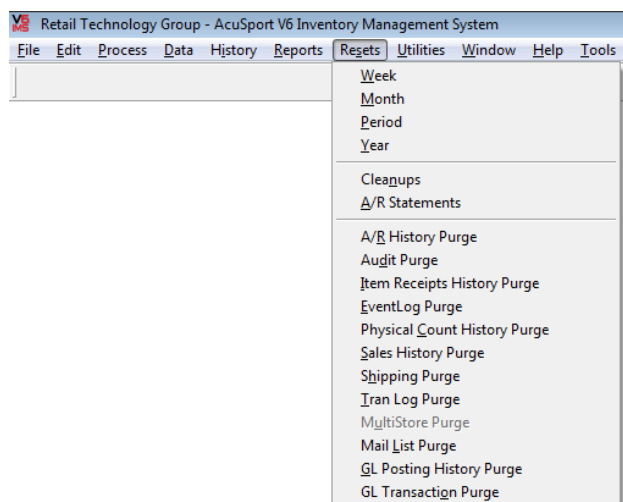
6. Click the **OK** button to close the window.

# Reset A/R Statements

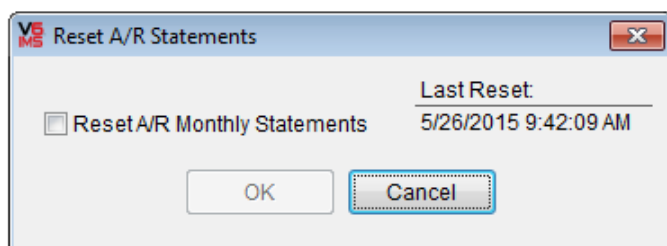
After verifying the [Accounts Reconciliation Report](#), complete the following procedure to reset the A/R Statements.

► Do not perform a reset unless the Accounts Reconciliation Report has been verified.

1. Click the **Resets** button in the menu bar to display a drop-down menu of reset options.



2. Click the **A/R Statements** option in the drop-down menu to display the **Reset A/R Statements** window.



3. Check the **Reset A/R Monthly Statements** check box.
4. Click the **OK** button to display an informational window.

► The window indicates which resets succeeded and which, if any, failed. If any resets failed, correct the problem and repeat the reset procedure. (A reset failure is typically caused by entries in the A/R Receipts Posting that have not been updated. Select **Process > AR Receipts Posting** from the menu bar to view entries.)

5. Click the **OK** button to close the window.

# Run the A/R Statements Report

---

RTG recommends running, printing, and saving the A/R Statements Report after [resetting A/R Statements](#) as part of EOM procedures:

This report should be printed as needed for hardcopy distribution and saved in an electronic file for future retrieval. Refer to the [Save a Report to a File](#) procedure for more information.

1. Select **Reports > Accounts Receivable** from the menu bar.
2. Click the **AR Statements** report to select it.
3. Click the **Next** button to display the **Filter Records** window.
4. Do not select filters.
5. Click the **Next** button to display the **Sort Records** window.
6. Do not select filters.
7. Click the **Next** button to display the **Output Options** window.
8. Complete the following procedures as needed:
  - Click the **Preview** button to preview the report.
  - Click the **Print** button to print the report.
  - Complete the [Save a Report to a File](#) procedure to save the report to a file.