



# Software Update Notes

## for the **AcuSport® V6 System Software**

---

Version 6.7099

Release Date: March 2015

The AcuSport® Retail Technology Group (RTG) provides this document as a high-level summary of the latest release of the AcuSport V6 software system. Refer to the following sections for information on the specific changes included with this update:

<b>IMS6 Changes.....</b>	<b>3</b>
User-Specific Auto Lock Feature.....	3
Security Window Permissions.....	3
MultiStore Log Screen.....	4
MultiStore Mail Records.....	4
Credit Card Processing Files.....	4
Bug Fixes.....	4
<b>POS6 Changes .....</b>	<b>6</b>
Layaway Button .....	6
Illinois Driver's License 2D Barcode Scan .....	6
Credit Card Processing Files.....	6

Be sure to update every system component with this newest version to apply these changes and fixes.

For assistance with technical issues and questions, contact the **RTG Support Line** at 1-800-547-7120 or [RTGSupport@AcuSport.com](mailto:RTGSupport@AcuSport.com).

# Notices

---

Copyright © 2015 AcuSport Corporation.  
940 Industrial Drive, Suite 107  
Sauk Rapids, MN 56379  
1-800-547-7120  
All rights reserved.

## General

No part of this document may be reproduced, distributed, performed, displayed, or used to prepare a derivative work without the prior and express written consent of AcuSport Corporation (“AcuSport”). The software described in this document is furnished under a license agreement and may be used only in accordance with the terms and conditions of the license agreement. Information in this document is subject to change without notice, and AcuSport assumes no responsibility for errors.

## Trademarks and Credits

ACUSPORT, AXIS, AXIS Retail Management System (AXIS RMS), AXIS Data Center, AXIS Register, and AXIS E4473 are trademarks of AcuSport and shall not be used without the express written permission of AcuSport.

Other trademarks, such as QuickBooks, are not being used as a trademark herein and are the property of the respective owners.

## Legal Counsel

This program, printed documentation, and documents should not be used as a substitute for professional advice in specific situations. The procedures, images, and examples in this document are for illustrative purposes only and may not be applicable in your setting due to differences in preference, settings, and/or state and local regulations.

The following notice is required by law:

**AcuSport products and services are not a substitute for the advice of an Attorney.**

**You are encouraged to seek the advice of your own attorney concerning the use and legality of this program, documentation, and forms.**

## Publication Information

Software Update Notes for the AcuSport® V6 System Software Version 6.7099  
Release Date: March 2015

# IMS6 Changes

## User-Specific Auto Lock Feature

The Auto Lock feature automatically shuts down the IMS application after a period of inactivity. (The length of this period may be defined in the **Auto Lock IMS After \_\_\_Minutes** field in the **IMS Properties** window.)

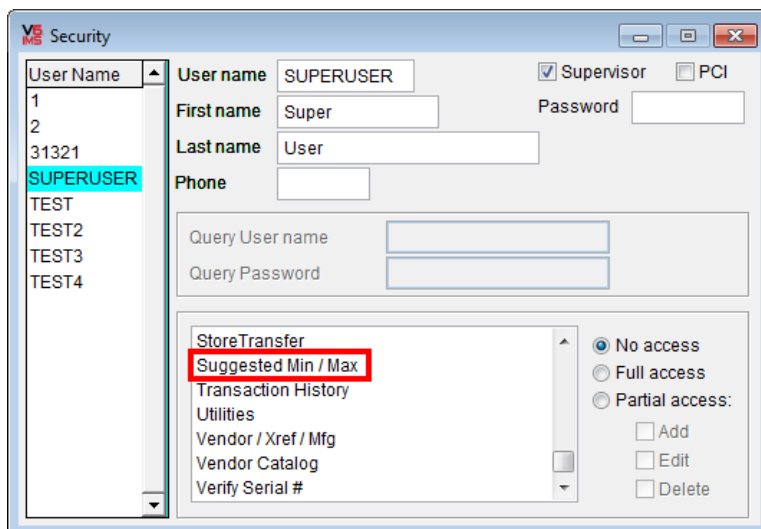
This feature is active only if the user has been assigned one or more of the following roles/permissions in his/her [Security window](#).

- The **Supervisor** checkbox

► If a user's **Supervisor** status is causing too many auto lock shutdowns, it may be helpful to deactivate his/her **Supervisor** checkbox and assign individual security permissions as needed.

- The **PCI** checkbox
- The **Full access** selection for the **Security** permission

## Security Window Permissions



► Select **Utilities > Security** from the Main Menu Bar to display the **Security** window.

## Suggested Min/Max permission

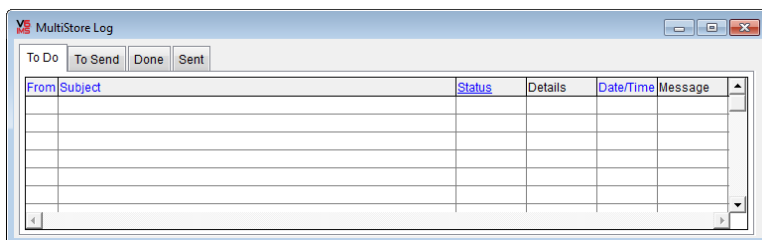
The **Suggested Min/Max** permission has been added to the **Security** window. It can be used to give a user full, partial, or no access to the following features:

- **Min / Max Weights** tab on the **Department** screen.
- **Calculate Suggested Min / Max** and **Replace All Min and Max with Suggested Values** buttons on the **Item** screen's **Min/Max** tab

## Reports - AcuSport permission

The **Reports - AcuSport** permission has been added to the **Security** window. It can be used to give a user full or no access to the AcuSport Report menu.

## MultiStore Log Screen



- Select **Data > MultiStore > MultiStore Log** from the Main Menu Bar to display the **MultiStore Log** window.

The **Status** column has been added to the screen's **To Do** tab. The column may be sorted and/or edited.

## MultiStore Mail Records

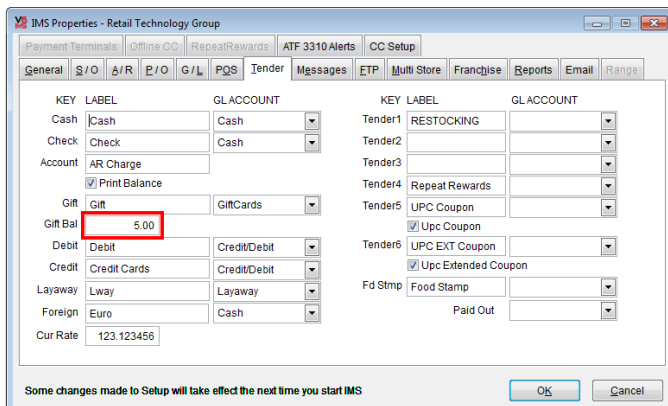
MULTISTORE/MAIL/CENTRALIZE records will now split at 1000 Mail records per record when transferring through MultiStore.

## Credit Card Processing Files

- The Credit Card Processing DLL for Global Payments has been updated.
- The Credit Card Processing DLL has been added to handle TLS verification.
- The Credit Card Processing DLL for Visanet/TSYS has been updated.

## Bug Fixes

- The **Gift Bal** (gift balance) field on the **IMS Properties** window's **Tender** tab does not allow a negative value.



- Previously, this field would accept a negative value.

- An alphabetic character in gift card number may now be changed from upper- to lowercase (or vice versa).
  - ▶ Previously, changing a character's case would cause the system to delete the gift certificate at the Store level.
- When a corporate purchase order is received, the system adds the **Vendor** name to the **AP Catalog**.
  - ▶ Previously, the vendor's name would not be added in this scenario.
- The **Total** field on the **Edit Purchase Order** window's **General** tab updates to reflect changes in other fields.

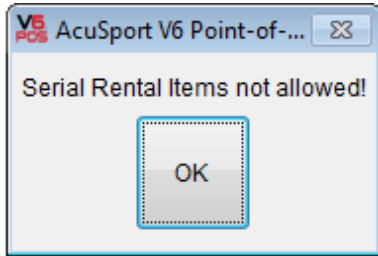
The screenshot shows the 'Edit Purchase Order' window with the 'General' tab selected. The window contains various fields for purchase order details. The 'Total' field at the bottom right is highlighted with a red box and displays the value '114.91'. Other visible fields include PO # (128), Vendor (ACUSPORT), Order Date (11/20/2014), Ship Date (11/20/2014), and several checkboxes for order processing options like 'Exclude Order', 'Queue Labels', 'PO Sent', and 'Cancel Back Order'.

- ▶ Previously, the field would not refresh.

# POS6 Changes

---

## Layaway Button



The **Serial Rental Items not allowed** message has been added to the **Layaway** button to prevent rental serial items from being placed on layaway.

## Illinois Driver's License 2D Barcode Scan

The system can now process a scan of an Illinois Driver's License 2D barcode.

## Credit Card Processing Files

- The Credit Card Processing DLL for Global Payments has been updated.
- The Credit Card Processing DLL has been added to handle TLS verification.
- The Credit Card Processing DLL for Visanet/TSYS has been updated.